

---

# Welcome

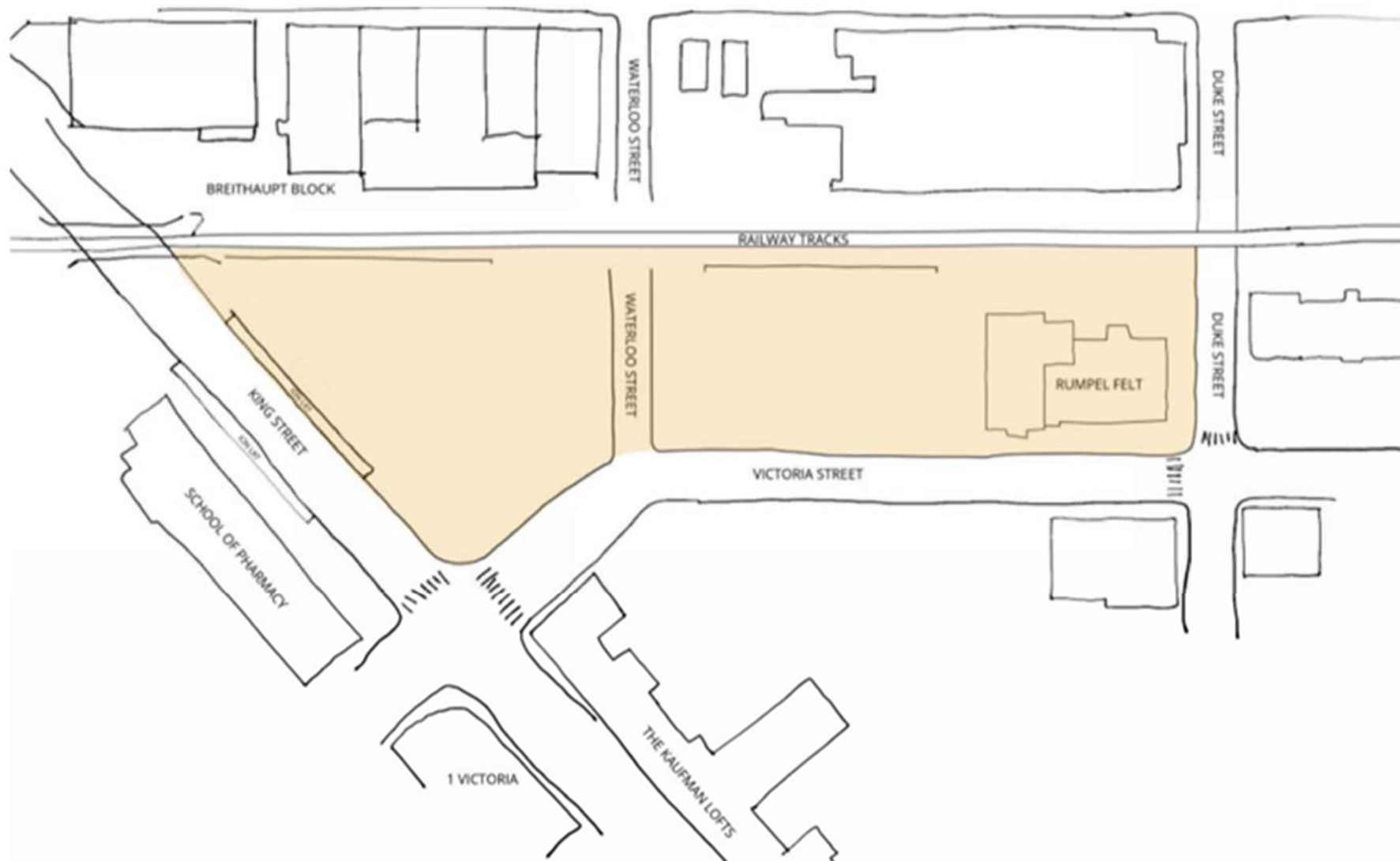


# Agenda

1. Safety briefing
2. Introductions
3. Why are we here, now?
4. Future Site: King-Victoria Transit Hub
5. Project Overview
6. Sneak Peek: King-Victoria Transit Hub
7. Connecting to GO Transit (Considerations)
8. Duke Street Traffic Impact Study
9. Questions and Discussion

*Your neighbourhood is an important stakeholder in our planning. We want you to have an opportunity to share your thoughts on how we can make this work for your community.*

# Future site: King-Victoria Transit Hub

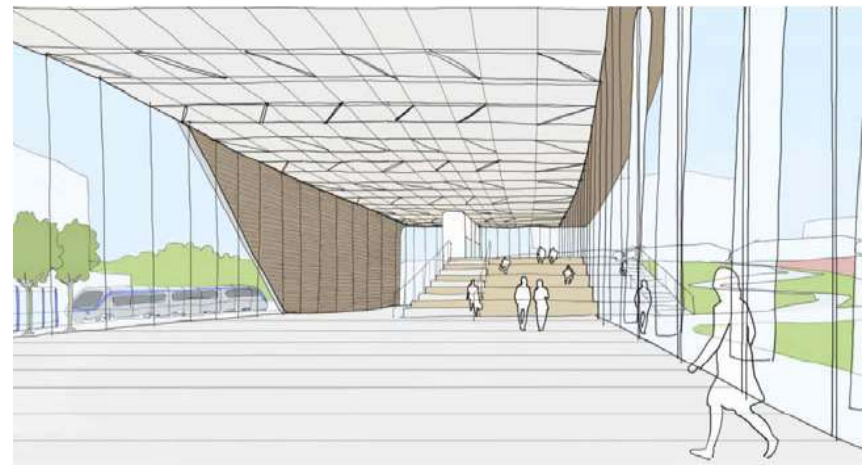


# Project Overview

- The King Victoria Transit Hub will connect ION, GRT, GO, VIA, pedestrians and cyclists in one convenient location. It will connect us to the Toronto-Waterloo innovation corridor and provide opportunities for community and economic development
- The project team is committed to an open and transparent process involving both community and business. All input collected by the Region has been considered when creating design concepts for the transit hub. A public design review panel also provides input into the project
- One of our important partners on the Hub will be Metrolinx, connecting to GO Transit is a priority for the Region and we know that more service between Toronto and Waterloo is a priority for the Community

# Sneak Peek: King Victoria Transit Hub

The Region is planning for public consultation early in 2020 to seek feedback on various Masterplan and hub design concepts



# Connecting to GO Transit: Considerations

## 1. Location of the Transit Hub

- The proximity to the Duke Street at-grade crossing and the King Street West Rail Bridge
- Proximity of existing buildings and underground utilities

## 2. Proximity to existing rail infrastructure

- The signal bridge and the Huron Park Spur west of King Street

## 3. Operational Requirements

- Provisions must be made for a 12-car GO train consist
- Two platforms serving two tracks accommodating future service expansion

# GO Platform Location: Considerations

## **Option 1** - Huron Park Spur Track Realignment (*deemed not feasible*)

- Scope: Platforms spanning King Street ensuring a safe clearance between the train and Duke Street is maintained
- Requires property purchase, realignment of the spur westward closer to homes, relocation of the signal bridge needed to maintain the clearance between the new platforms and signals

## **Option 2** – Duke Street Road Closure (*Preferred option*)

- Scope: Platforms spanning Duke street ensuring the required clearance and sight lines between the train and the Huron park spur signal bridge are maintained
- Duke street closed to vehicles due to Transport Canada’s “Blocked Crossing” regulations and public safety concerns prohibiting trains from stopping within 15m (50 feet) of a crossing
- Closing Duke better supports the planned service expansion
- Potential impacts on pedestrians and vehicles related to the proposed closing of Duke Street will be studied and mitigated

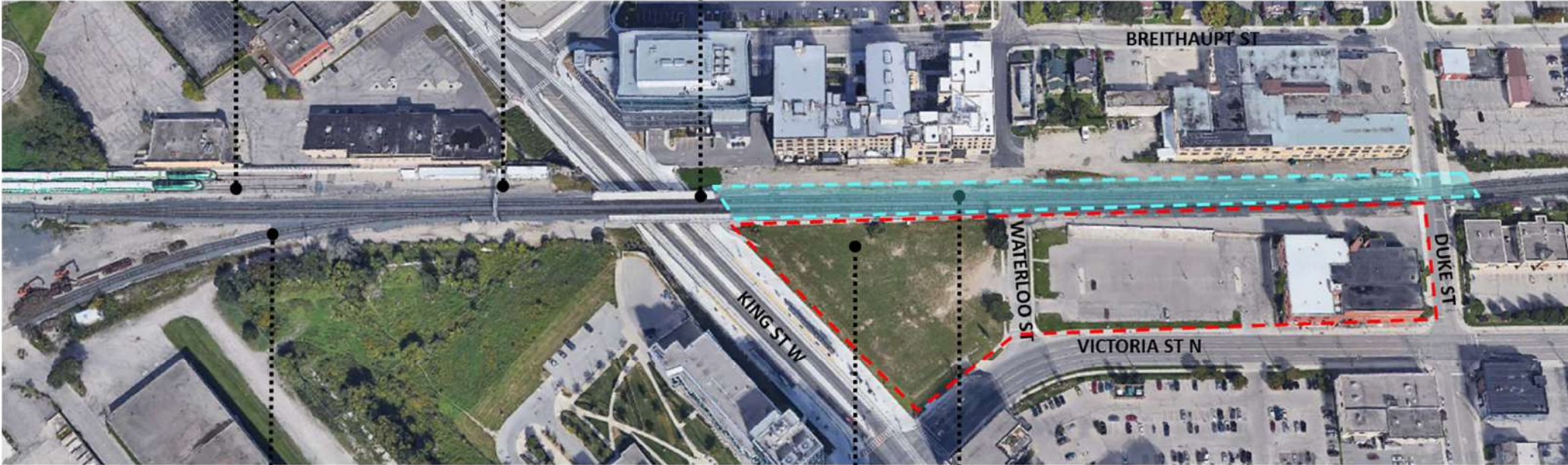




EXISTING GO TRAIN  
LAYOVER/STORAGE

EXISTING SIGNAL  
BRIDGE

EXISTING KING  
STREET BRIDGE



BREITHAUPT ST

KING ST W

WATERLOO ST

DUKE ST

VICTORIA ST N

LEGEND

- ON-CORRIDOR WORKS
- OFF-CORRIDOR WORKS

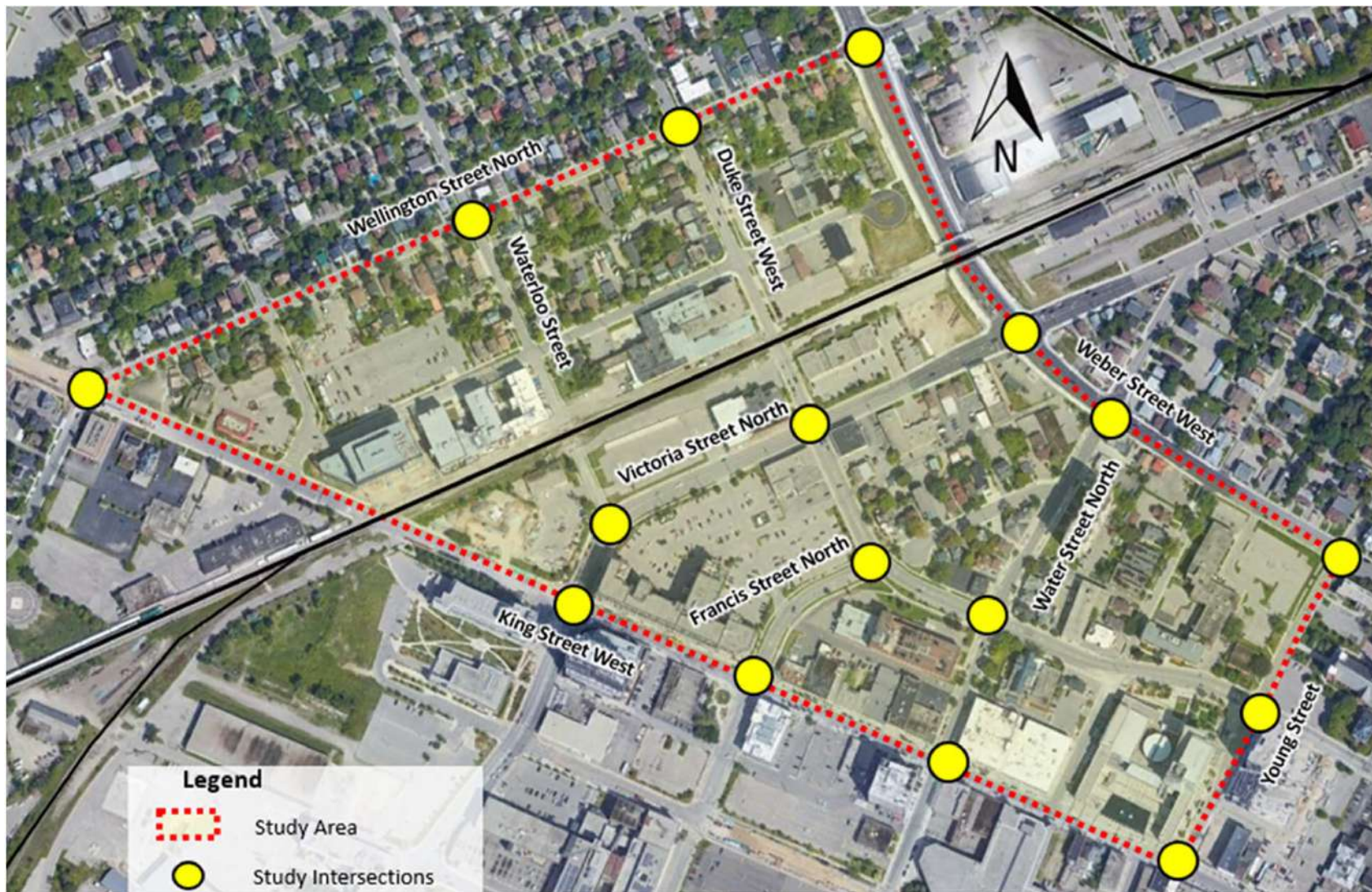
EXISTING HURON  
PARK SPUR

PROPOSED STATION  
BUILDING LOCATION

315 METER GO  
PLATFORMS



# Duke Street Traffic Impact Study (TIS)



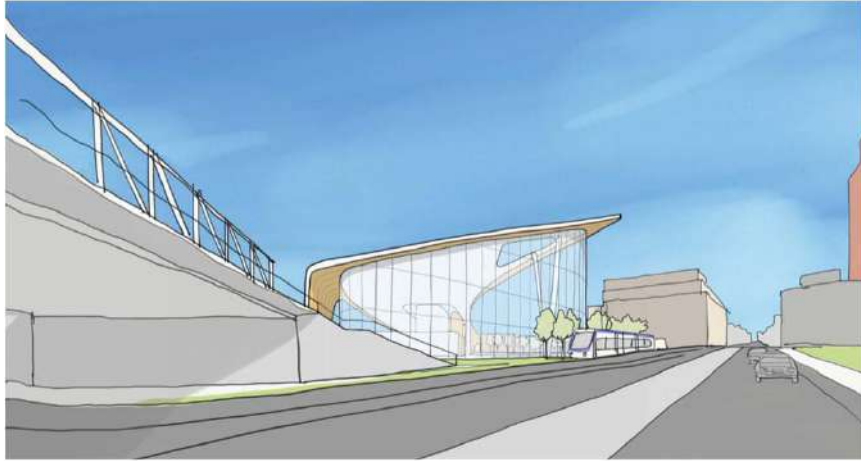
# King-Victoria Transit Hub - Next Steps

1. Concept development for Metrolinx and Region components
2. Preliminary Schedule as follows:

<b>Activity</b>	<b>schedule</b>
Concept Development	in progress
Public Consultation	Early 2020
Detailed Design	Spring 2020
Construction	Spring 2021



# Share Your Thoughts, Your Opinion Counts!



## Comment Forms:

- Please fill out a comment form and leave it with the Project Team. We want to hear from you!

## Questions?

Please register on [EngageWR.ca](http://EngageWR.ca) for future project updates

