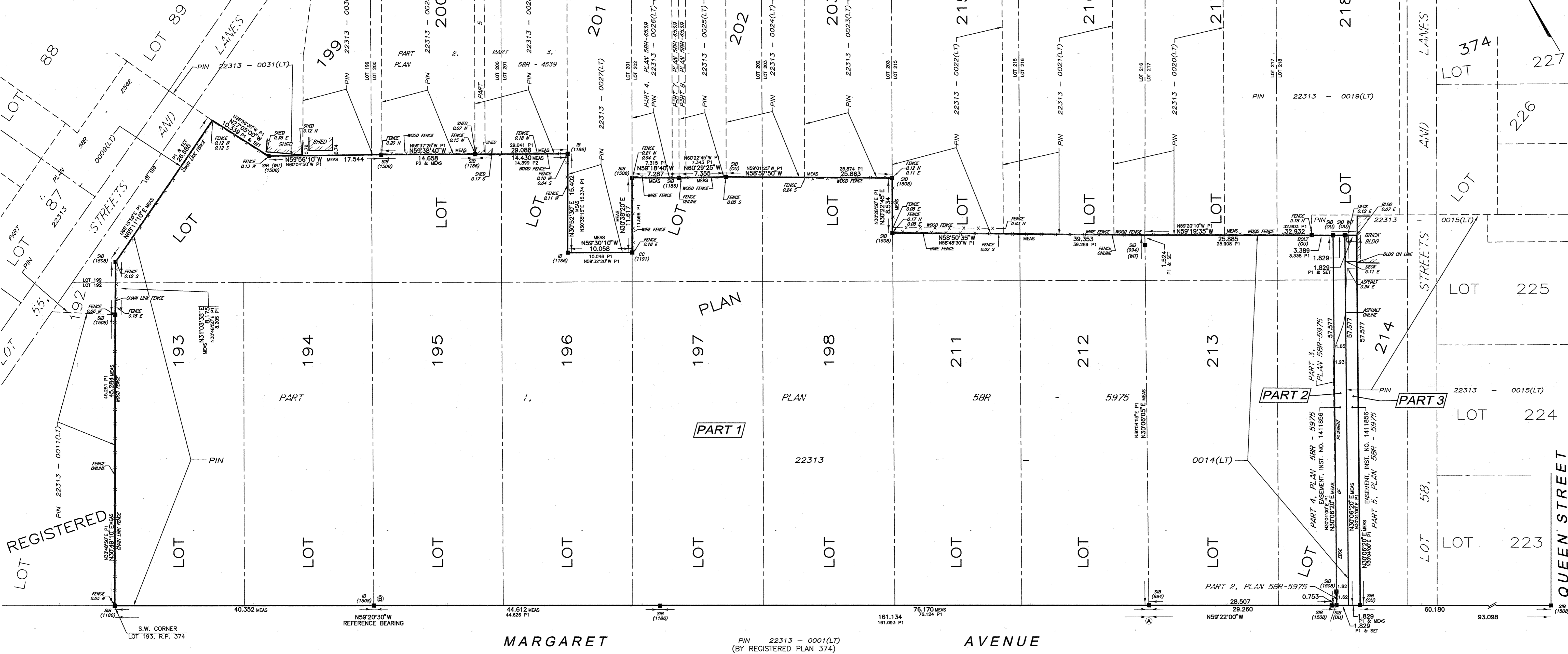


OBSERVED REFERENCE POINTS (ORP) DERIVED FROM GPS OBSERVATIONS USING THE CAN-NET VIRTUAL REFERENCE STATION NETWORK:
UTM ZONE 17, NAD83 (CSRS) (1997.0).
COORDINATES TO URBAN ACCURACY PER SEC 14(2) OF O. REG. 216/10

| POINT ID | NORTHING | EASTING |
|----------|--------------|------------|
| (A) | 4,811,471.32 | 541,552.52 |
| (B) | 4,811,532.14 | 541,448.22 |

COORDINATES CANNOT, IN THEMSELVES, BE USED TO RE-ESTABLISH CORNERS OR BOUNDARIES SHOWN ON THIS PLAN.

GRID SCALE CONVERSION
DISTANCES ARE GROUND AND CAN BE CONVERTED TO GRID BY MULTIPLYING BY THE COMBINED SCALE FACTOR OF 0.99957.



| SCHEDULE | | | |
|----------|---|---------------------|--------------------|
| PART | LOT | PLAN | PIN |
| 1 | LOTS 193, 194, 195, 196, 197, 198, 211, 212, 213 & PART OF LOTS 199, 200, 201, 202, 203, 214, 215, 216, 217 AND 218 | REGISTERED PLAN 374 | PIN 22313-0014(LT) |
| 2 | PART OF LOTS 214 AND 218 | | PIN 22313-0015(LT) |
| 3 | | | |

PARTS 1 & 2 COMPRISES ALL OF PIN 22313-0014(LT)
PART 3 COMPRISES PART OF PIN 22313-0015(LT)
PARTS 2 & 3 ARE SUBJECT TO EASEMENT, INST. NO. 1411856.

I REQUIRE THIS PLAN TO BE DEPOSITED UNDER THE LAND TITLES ACT.

RECEIVED AND DEPOSITED

JANUARY 21 2013

DATE

TAMMY WILKINSON
REPRESENTATIVE FOR LAND REGISTRAR FOR THE LAND TITLES DIVISION OF WATERLOO (58).

PLAN OF SURVEY
of
LOTS 193, 194, 195, 196, 197, 198, 211, 212, 213 AND PART OF LOTS 199, 200, 201, 202, 203, 214, 215, 216, 217 AND 218
REGISTERED PLAN 374
CITY OF KITCHENER
REGIONAL MUNICIPALITY OF WATERLOO
Scale 1:300
Stantec Geomatics Ltd.

METRIC CONVERSION
DISTANCES AND COORDINATES SHOWN ON THIS PLAN ARE IN METRES AND CAN BE CONVERTED TO FEET BY DIVIDING BY 0.3048

BEARING NOTE
BEARINGS ARE REFERRED TO THE NORTHEASTERLY LIMIT OF MARGARET AVENUE, AS SHOWN ON PLAN 58R-5975, HAVING A BEARING OF N59°20'30"W.
BEARINGS ARE DERIVED FROM PLAN 58R-5975 AND CAN BE CONVERTED TO GRID BEARINGS BY A ROTATION COUNTER-CLOCKWISE OF 00°24'20".

LEGEND

| | | |
|---|---------|--------------------------------|
| ■ | DENOTES | FOUND MONUMENTS |
| □ | | SET MONUMENTS |
| ○ | | IRON BAR |
| ● | | ROUND IRON BAR |
| ○ | | STANDARD IRON BAR |
| ○ | | SHORT STANDARD IRON BAR |
| ○ | | CUT CROSS |
| ○ | | NAIL & WASHER |
| ○ | | WITNESS |
| ○ | | PROPERTY IDENTIFICATION NUMBER |
| ○ | | MEASURED |
| ○ | | PROPORTIONED |
| ○ | | ORIGIN UNKNOWN |
| ○ | | STANTEC |
| ○ | | 994 W.D. BRUBACHER O.L.S. |
| ○ | | 1186 M. VORSTELDE O.L.S. |
| ○ | | 1191 G. RUEB O.L.S. |
| ○ | | 1508 S.D. McKECHNIE O.L.S. |
| ○ | | P1 PLAN 58R-5975 |
| ○ | | P2 PLAN 58R-4539 |
| ○ | | RP REGISTERED PLAN |

SURVEYOR'S CERTIFICATE
I CERTIFY THAT:
1. THIS SURVEY AND PLAN ARE CORRECT AND IN ACCORDANCE WITH THE SURVEYS ACT, THE SURVEYORS ACT AND THE LAND TITLES ACT AND THE REGULATIONS MADE UNDER THEM.
2. THE SURVEY WAS COMPLETED ON THE 12th DAY OF OCTOBER, 2012

OCTOBER 24, 2012
DATE

BRIAN CAMPBELL
ONTARIO LAND SURVEYOR

Stantec Geomatics Ltd.
Ontario Land Surveyors
49 FREDERICK STREET
KITCHENER, ONTARIO, N2H 6M7
PHONE (519)579-4410 FAX (519)579-8664
stantec.com

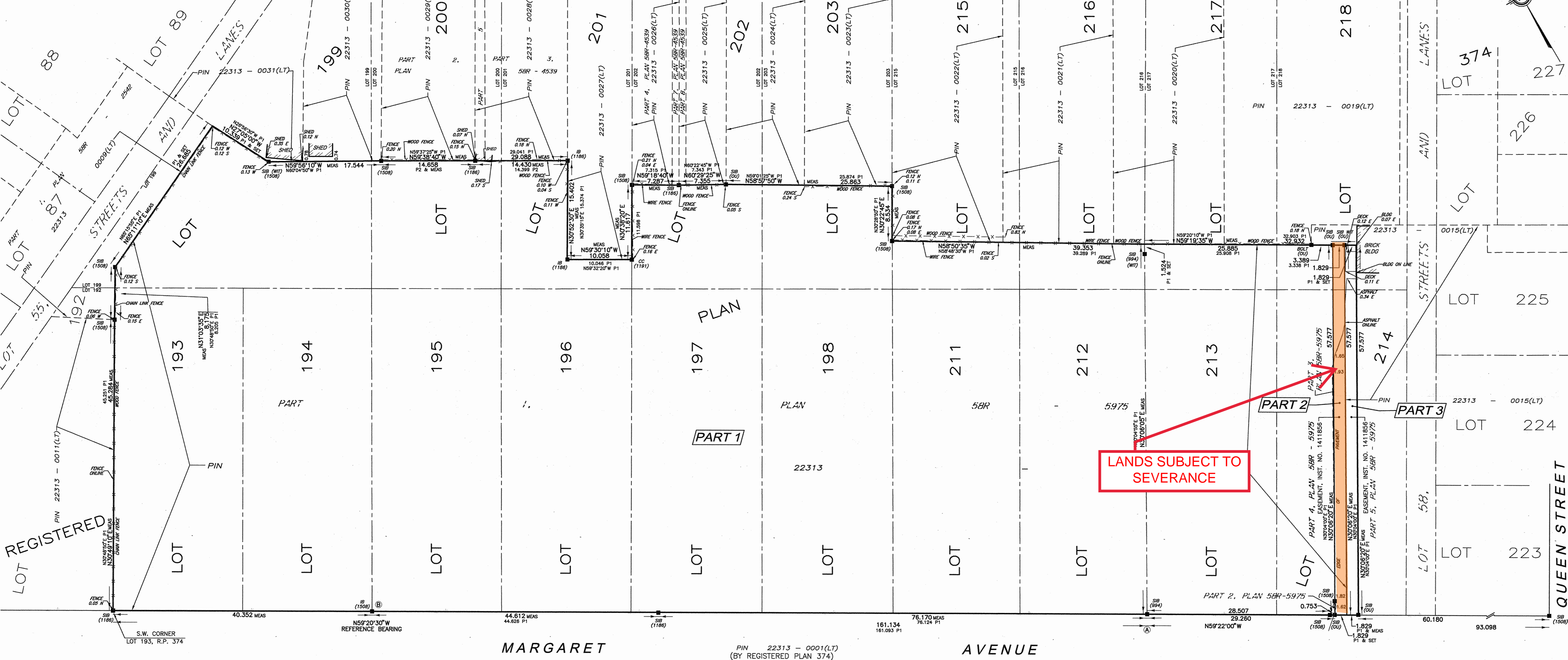
DRAWN BY: BL CHECKED BY: BDK DATE: October 23, 2012 PROJECT No.: 161660357-114

OBSERVED REFERENCE POINTS (ORPs) DERIVED FROM GPS OBSERVATIONS USING THE CAN-NET VIRTUAL REFERENCE STATION NETWORK:
UTM ZONE 17, NAD83 (CSRS) (1997.0).
COORDINATES TO URBAN ACCURACY PER SEC 14(2) OF O.REG. 216/10

| POINT ID | NORTHING | EASTING |
|----------|--------------|------------|
| (A) | 4,811,471.32 | 541,552.52 |
| (B) | 4,811,532.14 | 541,448.22 |

COORDINATES CANNOT, IN THEMSELVES, BE USED TO RE-ESTABLISH CORNERS OR BOUNDARIES SHOWN ON THIS PLAN.

GRID SCALE CONVERSION
DISTANCES ARE GROUND AND CAN BE CONVERTED TO GRID BY MULTIPLYING BY THE COMBINED SCALE FACTOR OF 0.99957.



| SCHEDULE | | | |
|----------|---|---------------------|--------------------|
| PART | LOT | PLAN | PIN |
| 1 | LOTS 193, 194, 195, 196, 197, 198, 211, 212, 213 & PART OF LOTS 199, 200, 201, 202, 203, 214, 215, 216, 217 AND 218 | REGISTERED PLAN 374 | PIN 22313-0014(LT) |
| 2 | PART OF LOTS 214 AND 218 | | PIN 22313-0015(LT) |
| 3 | | | |

PARTS 1 & 2 COMPRISES ALL OF PIN 22313-0014(LT)
PART 3 COMPRISES PART OF PIN 22313-0015(LT)
PARTS 2 & 3 ARE SUBJECT TO EASEMENT, INST. NO. 1411856.

I REQUIRE THIS PLAN TO BE DEPOSITED UNDER THE LAND TITLES ACT.

January 11, 2013
DATE

Brian Keep
BRIAN KEEP

PLAN 58R-17705
RECEIVED AND DEPOSITED

January 21, 2013
DATE

Tammy Wilkinson
TAMMY WILKINSON
REPRESENTATIVE FOR LAND REGISTRAR FOR THE LAND TITLES DIVISION OF WATERLOO (58).

PLAN OF SURVEY
of
LOTS 193, 194, 195, 196, 197, 198, 211, 212, 213 AND PART OF LOTS 199, 200, 201, 202, 203, 214, 215, 216, 217 AND 218
REGISTERED PLAN 374
CITY OF KITCHENER
REGIONAL MUNICIPALITY OF WATERLOO
Scale 1:300
Stantec Geomatics Ltd.

METRIC CONVERSION
DISTANCES AND COORDINATES SHOWN ON THIS PLAN ARE IN METRES AND CAN BE CONVERTED TO FEET BY DIVIDING BY 0.3048

BEARING NOTE
BEARINGS ARE REFERRED TO THE NORTHEASTERLY LIMIT OF MARGARET AVENUE, AS SHOWN ON PLAN 58R-5975, HAVING A BEARING OF N59°20'30"W.
BEARINGS ARE DERIVED FROM PLAN 58R-5975 AND CAN BE CONVERTED TO GRID BEARINGS BY A ROTATION COUNTER-CLOCKWISE OF 00°24'20".

LEGEND

| SYMBOL | DENOTES | FOUND MONUMENTS |
|---------|--------------------------------|--------------------------------|
| IB | IRON BAR | SET MONUMENTS |
| SIB | STANDARD IRON BAR | IRON BAR |
| SSIB | SHORT STANDARD IRON BAR | ROUND IRON BAR |
| CC | CUT CROSS | STANDARD IRON BAR |
| N&W | NAIL & WASHER | SHORT STANDARD IRON BAR |
| WIT | WITNESS | CUT CROSS |
| PIN | PROPERTY IDENTIFICATION NUMBER | NAIL & WASHER |
| MEAS | MEASURED | PROPERTY IDENTIFICATION NUMBER |
| PROP | PROPORTIONED | MEASURED |
| OU | ORIGIN UNKNOWN | PROP |
| STANTEC | STANTEC GEOMATICS LTD. | OU |
| 94 | W.D. BRUBACHER O.L.S. | STANTEC |
| 1186 | M. VORSTELVELD O.L.S. | 94 |
| 1181 | G. RUEB O.L.S. | 1186 |
| 1508 | S.D. MCKEON O.L.S. | 1181 |
| P-1 | PLAN 58R-5975 | 1508 |
| P-2 | REGISTERED PLAN | P-1 |

SURVEYOR'S CERTIFICATE
I CERTIFY THAT:
1. THIS SURVEY AND PLAN ARE CORRECT AND IN ACCORDANCE WITH THE SURVEYS ACT, THE SURVEYORS ACT AND THE LAND TITLES ACT AND THE REGULATIONS MADE UNDER THEM.
2. THE SURVEY WAS COMPLETED ON THE 12th DAY OF OCTOBER, 2012

OCTOBER 24, 2012
DATE

Brian Campbell
BRIAN CAMPBELL
ONTARIO LAND SURVEYOR

Stantec Geomatics Ltd.
Ontario Land Surveyors
49 FREDERICK STREET
KITCHENER, ONTARIO, N2H 6M7
PHONE (519) 579-4410 FAX (519) 579-8664
stantec.com

DRAWN BY: BL CHECKED BY: BDK DATE: October 23, 2012 PROJECT No.: 161660357-114

